

AC INFINITY

# REFILLABLE CARBON FILTER

## PREMIUM AUSTRALIAN CHARCOAL

USER MANUAL



## WELCOME

Thank you for choosing AC Infinity. We are committed to product quality and friendly customer service. If you have any questions or suggestions, please don't hesitate to [contact](#) us. Visit [www.acinfinity.com](http://www.acinfinity.com) and click contact for our contact information.

### EMAIL

[support@acinfinity.com](mailto:support@acinfinity.com)

### WEB

[www.acinfinity.com](http://www.acinfinity.com)

### LOCATION

Los Angeles, CA

## MANUAL CODE RCF2303X1

### PRODUCT

Refillable Duct Filter, 4"  
Refillable Duct Filter, 6"  
Refillable Duct Filter, 8"  
Premium Activated Carbon, 4 lb  
Premium Activated Carbon, 8 lb  
Premium Activated Carbon, 16 lb  
Premium Activated Carbon, 32 lb

### MODEL

AC-RCF4  
AC-RCF6  
AC-RCF8  
AC-CAR4  
AC-CAR8  
AC-CAR16  
AC-CAR32

### UPC-A

819137024168  
819137024175  
819137024199  
819137024267  
819137024236  
819137024243  
819137024250

# MANUAL INDEX

Manual Index .....	Page 5
Product Warning .....	Page 6
Key Features .....	Page 7
Product Contents .....	Page 8
Installation .....	Page 9
Overhead Hanging .....	Page 10
Configuration Setup .....	Page 14
Maintenance .....	Page 17
Replacing the Carbon .....	Page 18
Carbon Refill Guide .....	Page 21
Frequently Asked Questions .....	Page 22
Other AC Infinity Products .....	Page 23
Warranty .....	Page 24

# PRODUCT WARNING



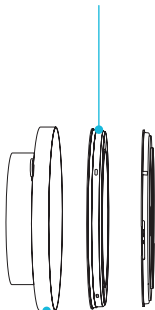
TO REDUCE THE RISK OF FIRE, ELECTRIC SHOCK, OR INJURY TO PERSONS, OBSERVE THE FOLLOWING:

1. Check your local code restrictions for additional safety measures that may be needed for a proper code compliant installation.
2. Check local authority requirements for proper disposal of waste and residues.
3. Read all instructions before installing and using this product.
4. If you are unfamiliar or have doubts about performing this product's installation, seek the services of a qualified, trained, and licensed professional. Inappropriate installation will void this product's warranty.
5. This product must not be used in potentially hazardous locations such as flammable, explosive, chemical-laden, or wet atmospheres.
6. This product requires sufficient ventilation in order to properly function.
7. Ducted products must always be vented to outdoor areas.
8. Regular maintenance as outlined in the instructions is recommended to maintain ideal operation. Preventing dust accumulation will minimize potential hazards.
9. This product pairs with those that have rotating parts. Safety precautions should be exercised during the installation, operation, and maintenance of this product.
10. Ensure that safety systems are in place in case of any fire breakout.

# KEY FEATURES

## REFILLABLE DESIGN

Easy-to-remove flanges with rubber stopper ensure convenient disposal and refilling of activated carbon.

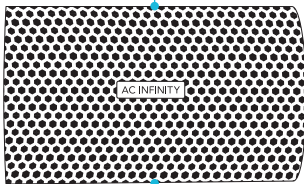


## REVERSIBLE FLANGES

Aluminum flanges can be removed and placed on the opposite ends to fully utilize the carbon bed inside.

## RUST-RESISTANT

Features powder-coated mesh that resists corrosion and can withstand high humidity settings.

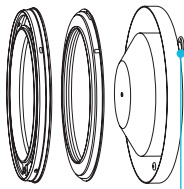


## MAX AIR PASSTHROUGH

Hexagonal-shaped design allows complete circulation of air suitable for both intake and exhaust applications.

## ACTIVATED CARBON

RC412 1200+ IAV Australian charcoal with high adsorption rate to completely block odor and scrub the air.

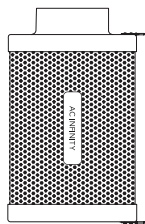


## SECURE PLACEMENT

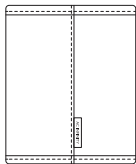
Hanging hooks are fastened to the flanges away from the steel mesh to ensure a secure hold while preventing airflow loss.



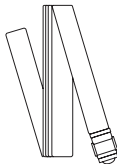
# PRODUCT CONTENTS



DUCT  
FILTER  
(x1)



PREFILTER  
CLOTH  
(x2)



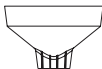
FILTER  
STRAPS  
(x2)



ROPE  
CLIP  
(x2)



STEEL  
SCOOP  
(x1)



CARBON  
FUNNEL  
(x1)



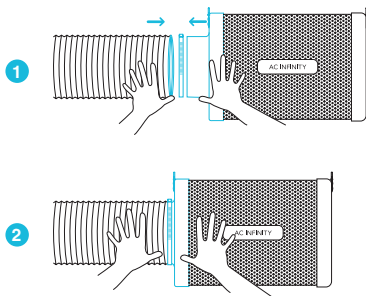
CARBON  
REFILL  
(x1)



# INSTALLATION

## STEP 1

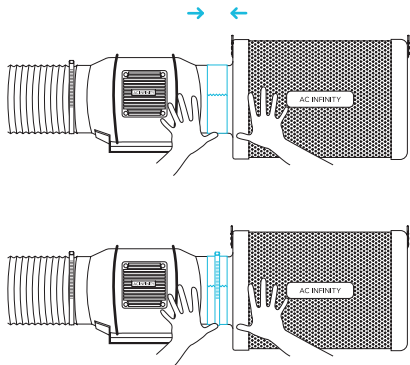
Connect your duct tube over your filter. Use duct clamps to secure the connection. You may also apply ducting tape before using the duct clamps for further security.



## STEP 2

You may also connect your filter directly to your inline duct fan. Use duct clamps to secure them together.

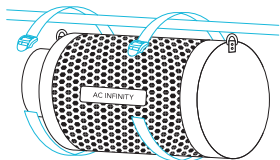
If your filter is placed in a humid space, position it at the highest point possible.



# OVERHEAD HANGING STRAPS

## STEP 1

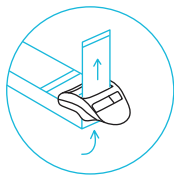
Loop the strap around a hanging pole.



---

## STEP 2

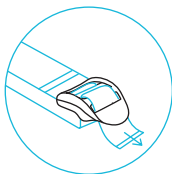
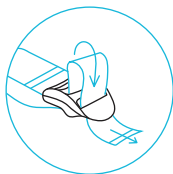
Slip the strap through the inner ladder lock slot from the bottom.



# OVERHEAD HANGING STRAPS

## STEP 3

Route the strap into the outer ladder lock slot from the top. Adjust the length of the completed loop as needed.

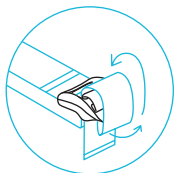


Adjust to size

---

## STEP 4

Tuck the loose ends through the center gap of the ladder lock to secure the loop.



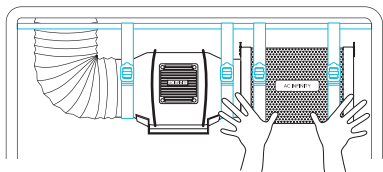
Loop through middle  
to lock in place

# OVERHEAD HANGING

## STRAPS

### STEP 5

Connect your filter to your ductwork using your preferred method, as shown on page 9.

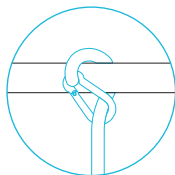


# OVERHEAD HANGING

## ROPE CLIPS

### STEP 1

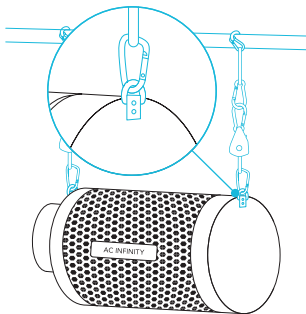
Loop the rope clip hangers around your grow tent's support beams.



---

### STEP 2

Hook the carabiners into the steel hooks located on the flanges.

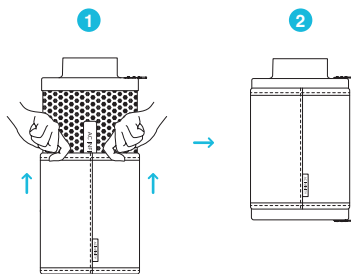


# CONFIGURATION SETUP

## PREFILTER

When placing your filter inside your grow space, slip the cloth over your filter to block dust and other particles from passing through.

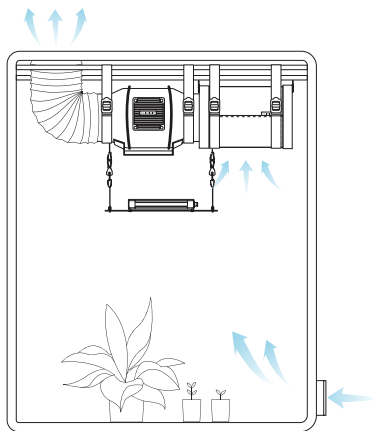
Make sure the entire metal mesh is covered by the cloth.



## INTERIOR HANGING

To use your filter in intake applications, place it inside your grow space.

Make sure your filter is connected to your inline duct fan's intake end before completing the installation.

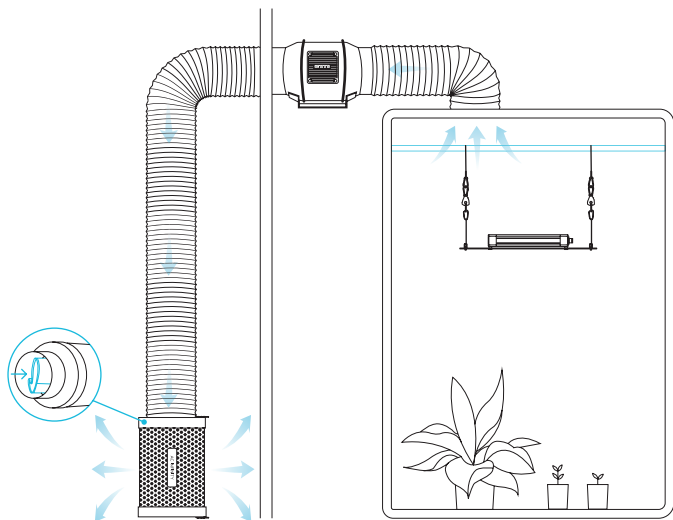


# CONFIGURATION SETUP

## EXTERIOR MOUNTING

To use your filter in exhaust applications, place the filter outside of your grow space. Make sure your filter is connected to your inline duct fan's exhaust end before completing the installation.

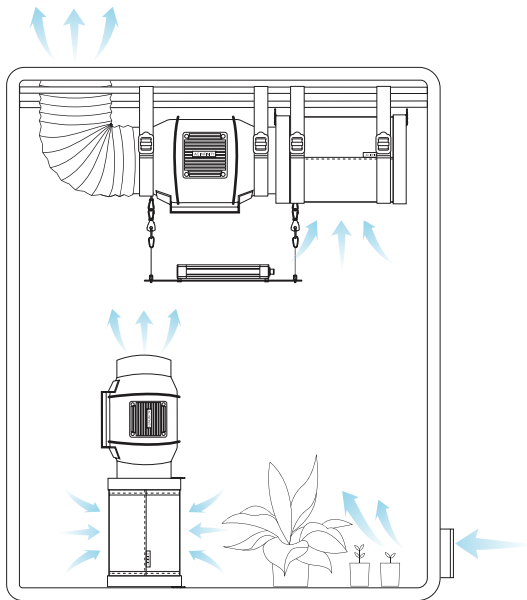
Stuff the prefilter inside of the filter to lengthen the carbon bed's lifespan.



# CONFIGURATION SETUP

## OVERSIZED GROW SPACE

Use a dual fan and filter combination inside your grow space to completely scrub away odor in larger grow rooms and tents. Set a second filter on the floor and an inline fan on top of it so that the exhaust end points up.



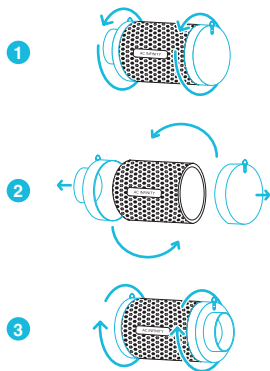


# MAINTENANCE

## REVERSING THE FLANGES

To extend your filter's lifespan and utilize its entire carbon bed, remove the flanges from either end, swap them to the other ends, and twist them back into place.

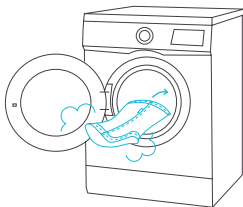
Lay the filter horizontally when reversing the flanges. Ensure the stopper is in place to keep the carbon from spilling out.



---

## WASHING THE PREFILTER

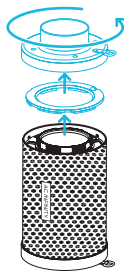
Wash the reusable cloth as needed to clear it of any dust and build-up. This will further extend the lifespan of your filter.



# REPLACING THE CARBON

## STEP 1

Rotate the port flange from your filter, then remove the rubber stopper from the interior.

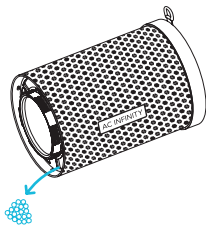


---

## STEP 2

Dispose of the used carbon.

Used carbon can be composted.



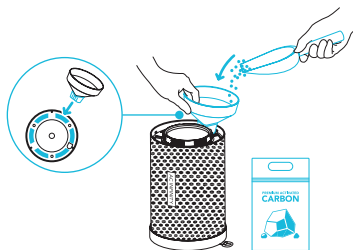
# REPLACING THE CARBON

## STEP 3

Place and direct the funnel into one of the openings and scoop the carbon refill into your filter.

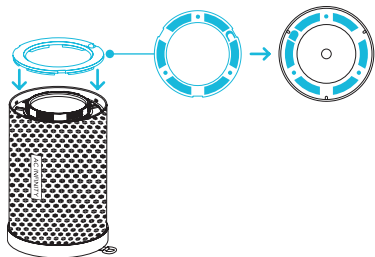
Make sure to evenly distribute and firmly pack the activated carbon as you refill your filter.

Do not fill past the plastic barrier.



## STEP 4

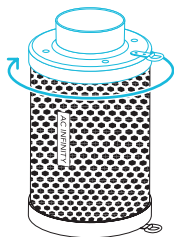
Set the rubber stopper into place, making sure to align the nodes with the corresponding holes.



# REPLACING THE CARBON

## STEP 5

Twist the flange back onto your filter.







# CARBON REFILL GUIDE

## RECOMMENDED REPLACEMENT

The chart below outlines the approximate number of refills each capacity can provide for your carbon filter.

How often you replace the activated carbon will depend on your use. We recommend keeping its carbon bed in place until you begin to smell odors.

	 4 lb AC-CAR4	 8 lb AC-CAR8	 16 lb AC-CAR16	 32 lb AC-CAR32
Refillable Carbon Filter 4" AC-RCF4	1 REFILL	2 REFILLS	4 REFILLS	8 REFILLS
Refillable Carbon Filter 6" AC-RCF6	N/A	1 REFILL	2 REFILLS	4 REFILLS
Refillable Carbon Filter 8" AC-RCF8	N/A	N/A	1 REFILL	2 REFILLS

Additional charcoal refills available in many sizes at [www.acinfinity.com](http://www.acinfinity.com)

# FREQUENTLY ASKED QUESTIONS

**Q:** How long will the activated carbon last?

**A:** The included carbon should last between 1-2 grow cycles. This will depend on several factors including fan speed and frequency of use.

---

**Q:** What is the black dust coming from the activated carbon?

**A:** Black dust from the carbon may appear due to movement during shipping, but should disappear after first use.

---

**Q:** How can I extend the life of my carbon filter?

**A:** There are a number of recommended steps you can take to ensure that your carbon filter lasts longer. This includes cleaning the prefilter cloth and regularly reversing the filter's flanges. Please refer to page 17 for details. We also recommend not using the carbon filter until the germination process begins and odors appear.

---

**Q:** Where should I place the prefilter cloth?

**A:** Slip the prefilter over your carbon filter for use in intake applications. Place the prefilter inside of the carbon filter for use with exhaust fans. Refer to pages 14-15 for more details.

---

**Q:** How can I get more carbon refills?

**A:** You may purchase activated carbon refills of many sizes at [acinfinit.com](http://acinfinit.com). Refer to the previous page for details on how often you should replace your filter's carbon bed.

---

**Q:** How do I prevent any carbon from spilling out?

**A:** After refilling your filter, make sure the rubber stopper is properly aligned and securely set in place. Do not overfill your filter.

---

**Q:** How far do I fill my carbon filter?

**A:** Do not fill your carbon filter past the plastic barrier. Doing so can prevent the rubber stopper and flange from being properly reinstalled.

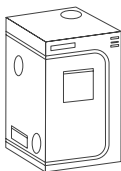
---

# AC INFINITY PRODUCTS

## Advance Grow Tents

The CLOUDLAB series is a line of grow tents designed to create ideal growing conditions and facilitate indoor plant cultivation year-round. Features 2000D thick oxford canvas lined with inner diamond patterned mylar that maximizes grow light luminosity, and a reinforced frame with 150 lb. weight capacity. Includes a mounting plate to install your AC Infinity controller onto.

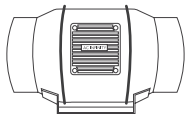
---



## Inline Fans

The CLOUDLINE series is a line of duct fans designed to quietly ventilate AV rooms and closets, as well as various DIY air circulation and exhaust projects. Features a thermal controller with intelligent programming that will automatically adjust duct fan speeds in response to changing temperatures.

---



## Duct Silencer

The duct silencer is designed to dampen fan and airflow noise traveling through ductwork. Made for use in inline duct applications such as HVAC, grow tents, server closets and more. Uses neoprene foam in egg crate formation to reduce noise by up to 50%.



Discover the latest innovations in environmental controls at [acinfinity.com](http://acinfinity.com)

# WARRANTY

This warranty program is our commitment to you, the product sold by AC Infinity will be free from defects in manufacturing for a period of two years from the date of purchase. If a product is found to have a defect in material or workmanship, we will take the appropriate actions defined in this warranty to resolve any issues.

The warranty program applies to any order, purchase, receipt, or use of any products sold by AC Infinity or our authorized dealerships. The program covers products that have become defective, malfunctioned, or expressively if the product becomes unusable. The warranty program goes into effect on the date of purchase. The program will expire two years from the date of purchase. If your product becomes defective during that period, AC Infinity will replace your product with a new one or issue you a full refund.

The warranty program does not cover abuse or misuse. This includes physical damage, submersion of the product in water, incorrect installation such as wrong voltage input, and misuse for any reason other than intended purposes. AC Infinity is not responsible for consequential loss or incidental damages of any nature caused by the product. We will not warrant damage from normal wear such as scratches and dings.

Contact our dealers department at [dealers@acinfinity.com](mailto:dealers@acinfinity.com) or (626) 838-4656 for more information about our dealers and distributors program. Contact our customer service department at [support@acinfinity.com](mailto:support@acinfinity.com) or 626-923-6399 for product and warranty assistance. Our business hours are Monday through Friday, 9:00 am to 5:00 pm PST.



**If you have any issues with this product, contact us and we'll happily resolve your problem or issue a full refund!**



**COPYRIGHT © 2023 AC INFINITY INC. ALL RIGHTS RESERVED**

No part of the materials including graphics or logos available in this booklet may be copied, photocopied, reproduced, translated or reduced to any electronic medium or machine readable form, in whole or in part, without specific permission from AC Infinity Inc.





[www.acinfinity.com](http://www.acinfinity.com)